



Southern California
Counseling Center

**FAST
FACTS**

**FOUNDED
1966**

OUR MISSION

We change lives and strengthen communities by providing affordable mental health care to people in need.

We Believe Mental Health Care is a Right, Not a Privilege: All of our services are designed to serve marginalized, underserved communities and people in need who have difficulty accessing and affording quality mental health services.

Clients Served Annually

5,000



women, men &
children receive
over

40,000

hours of counseling services.

Average Fee Paid for a Counseling Session: **\$22**. More than **50%** of our clients pay **\$16** or less.

Support

Of our \$1.6 million budget, about 60% comes from client fees, 15% from grants, and 25% from individuals. We have never accepted government funding and do not accept insurance.

Mid-City, Watts & Koreatown

Headquartered in Mid-City. In 2018, **SCCC** has had a satellite location on the campus of Watts Labor Community Action Committee (WLCAC), providing group and individual counseling to members of the Watts community. **SCCC** also offers counseling in Koreatown from the Karsh Center.



Community Partnerships

Watts Labor Community Action Committee (WLCAC), Karsh Family Social Service Center, Los Angeles Unified School District, Los Angeles County Department of Children and Family Services, Los Angeles County Probation Department.



Community Outreach

Our programs reduce gang and community violence and help adults, teens and children develop the attitudes, skills and strengths needed to choose nonviolent alternatives in response to rage, stress, and societal pressures.

Client Services

Individual, couple, group and family

counseling services address the full range of mental health issues, including trauma, loss and grief, family conflict, parent/child problems, domestic violence, work difficulties, and disorders such as depression, anxiety and PTSD among many others.



8

LAUSD Schools Served



Fairfax High School, John Burroughs Middle School, Shenandoah Elementary School, Marvin Elementary School, Larchmont Charter School at Fairfax, Larchmont Charter School at Selma, Larchmont Charter School at Hollygrove, and Saturn Elementary School.

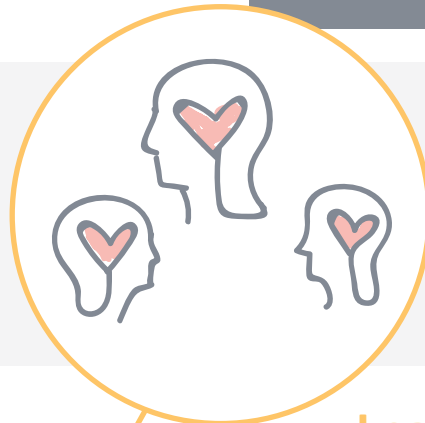
Client Services

GROUPS

Youth Empowerment & Enrichment, Community Mindfulness & Compassion, Best Practice Parenting, Stress Navigation & Anger Management, Women in Transition, Personal & Relationship Support Group, Healing from Betrayal, and The Abuse Prevention Program (TAPP) - offering 8 groups for men and women.

Client Services

Psychiatric Services



Two on-site psychiatrists provide medication assessment, prescription and follow-up at fees consistent with our low counseling fees.

Staff & Volunteers

10 10 full-time and 11 part-time paid staff along with about 100 volunteer pre-licensed counselors and 90 volunteer clinical supervisors.



Leading Edge Training

A wide variety of training programs for current counselors, alumni and the broader community of mental health professionals and those working at other agencies serving poor and disenfranchised populations.

Counselors

Over 100 graduate-level, pre-licensed mental health interns and community counseling paraprofessionals are supervised by 90 volunteer clinical supervisors annually.



Southern California
Counseling Center

Hours of operation: Monday through Friday, 8 am to 9 pm; Saturday and Sunday, 9 am to 5 pm